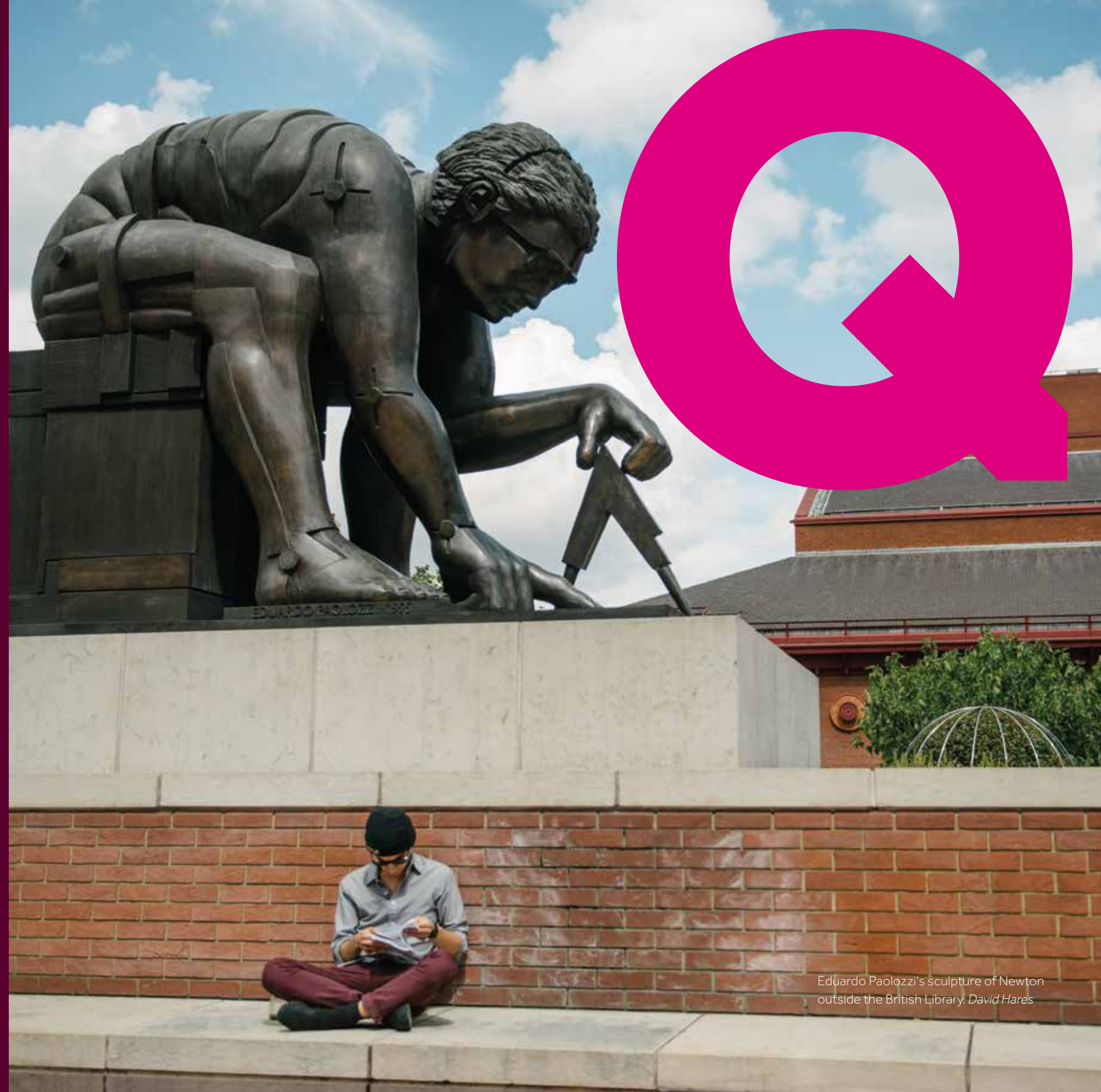


Foreword	3
What is the Knowledge Quarter?	4
Knowledge exchange	6
Community engagement	8
Public realm, environment and sustainability	10
Advocacy and communications	12
Looking forward	14
Partner organisations	16



Eduardo Paolozzi's sculpture of Newton outside the British Library. *David Hares*



Hoardings around Battle Bridge Place, King's Cross. David Hares

FOREWORD

ROY KEATING
CHAIR, KNOWLEDGE QUARTER BOARD



I am delighted to have the opportunity of introducing the Knowledge Quarter's first Annual Review. After a year of delivery it is a privilege to be able to pause and reflect on how much we have achieved, the connections we have made and collaborations we are helping to form.

The Knowledge Quarter is a network of over 55 academic, cultural, research, scientific and media organisations situated within a one mile radius of King's Cross, who all have within their purpose the creation and dissemination of knowledge.

Our newly formed network is deeply committed to fostering knowledge exchange and collaboration between specialists in numerous fields, providing opportunities for staff and users to exchange ideas, expertise and evidence.

In December 2014 at the official launch of the Knowledge Quarter, the Chancellor George Osborne MP commented: *"If you look at all the exciting things that are happening here – the renovation of Kings Cross – it really is one of the most exciting places in the world."*

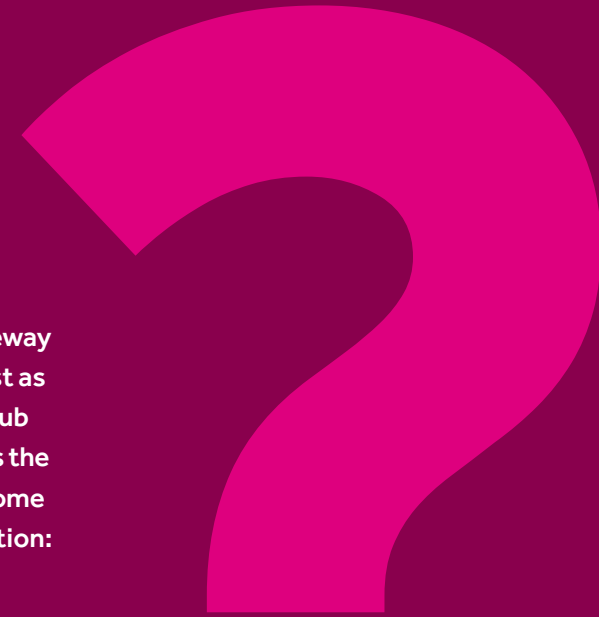
The positive response to the Knowledge Quarter launch reflects the Chancellor's sentiments and since December 2014 we have welcomed a further 24 organisations as partners. Our early success is a real testament to the commitment and support of all our partners, including those who have been involved in developing the Knowledge Quarter vision since our very first conversations back in 2012.

Having completed our first year in operation we have delivered a programme of activities, events and projects helping to position the Knowledge Quarter as a world-class knowledge and business hub for the 21st century.

Early in the development of the Knowledge Quarter, and with our partners support, we identified four strategic priorities which we have used to develop our core activities and projects: Knowledge Exchange, Community Engagement, Public Realm, Environment and Sustainability and Advocacy and Communications. These areas of focus have set the direction of our activities to date.

After a successful and inspiring launch, and the subsequent recruitment of Jodie Eastwood as Project Manager, the profile of the Knowledge Quarter has increased steadily through our communications, advocacy and stakeholder engagement.

I would like to take this opportunity to say a huge thank you to those who have supported the Knowledge Quarter through partnership and other means. As a network we will continue to thrive, grow and develop. Our task now is to build on what has been an extraordinary first year and to continue to encourage conversations and collaborations between the Knowledge Quarter network and beyond.



The area around King's Cross, St Pancras and Euston stations is a gateway to the most valuable commodity of the 21st century – knowledge. Just as the great Victorian railway engineers built a revolutionary transport hub for people and goods in this part of London, and South Kensington was the knowledge hub of the 19th century, so the Knowledge Quarter has become established as an interchange for creative ideas, research and innovation: a centre for the knowledge economy in the 21st century.

WHAT IS THE KNOWLEDGE QUARTER

Within a one-mile radius (approximately 10-15 minute walk) is a remarkable cluster of organisations spanning research, higher education, science, art, culture and media. Individually they offer resources for specialists in numerous fields, from architecture and the arts to biotechnology and veterinary science. Together they represent a concentration of knowledge and expertise to rival any in the world. What links them all is a focus on the advancement and dissemination of knowledge for research, inspiration, growth, creativity and enjoyment.

The Knowledge Quarter brings together over 55 cultural, research, scientific, business and academic institutions large and small under one umbrella, positioning the area as unique in the knowledge economy. It is becoming a recognisable brand that resonates with all kinds of

knowledge seekers, whether prospective visitors, UK and overseas students or other knowledge based institutions and businesses.

The Knowledge Quarter fosters knowledge exchange and collaboration between staff and users of cross-disciplinary communities to exchange ideas, expertise and evidence. Developing networks to encourage collaborative projects, training, commissioned research and access to funding is engaging a wide variety of audiences and benefiting the local research community.

Just as St Pancras International has become a new gateway to Europe, so the Knowledge Quarter is becoming synonymous in the public mind as the gateway to knowledge.



Our vision is a world-class knowledge and business hub for the 21st century.

Our mission is to encourage openness, innovation, networking and opportunity by making the facilities, collections and expertise of our members understood, available and used as widely as possible for the benefit of researchers, creative people, students and the whole community.

Strategic priorities

- 1 Knowledge exchange:** Facilitate knowledge exchange and identify opportunities for openness, collaboration, networking and efficiencies.
- 2 Community engagement:** Increase access to resources and collections and create opportunities for local community engagement.
- 3 Public realm, environment and sustainability:** Identify and support work that improves our local sustainable environment.
- 4 Advocacy and communications:** Increase the area's profile through advocacy and stakeholder engagement.

The Knowledge Quarter is creating and encouraging openness in knowledge exchange and collaboration for partners and staff of our cross-disciplinary community to create and exchange ideas through the Knowledge Quarter network.

The Knowledge Quarter seeks to bring its partners together, sometimes just with each other and at other times with a wider set of key stakeholders to explore new partnerships, develop ideas or simply share knowledge.

Cumulatively, the Knowledge Quarter has delivered 27 events to over 25,000 attendees since its launch in December 2014, directly partnering with Central St Martins, University of the Arts London, the Engineering and Physical Sciences Research Council and Argent amongst many others.

Three examples this year include 'Curious?' our festival of knowledge, the first of our series of knowledge sharing workshops 'Modelling the Knowledge Business' and the conference 'Questioning Rights: Disruptive and emerging IPR management practices in the arts.'

PROJECT

Questioning Rights, disruptive and emerging IPR management practices in the arts

In April 2015, the Knowledge Quarter delivered the 'Questioning Rights' conference developed in partnership with Central Saint Martins, University of the Arts London and Archiving the Arts. The conference examined the challenges and opportunities of intellectual property rights (IPR) for the creative and cultural sector.

We drew together a wide range of speakers to share their expertise and practical experiences of navigating IPR issues. From libraries and archives to legal professionals and creative practitioners, so that Knowledge Quarter partners could discover and explore how colleagues are pushing the boundaries and managing risks.

PROJECT

Curious? Powered by the Knowledge Quarter

In August 2015, the Knowledge Quarter held its first festival of knowledge in partnership with King's Cross. 'Curious?' was a free, fun-packed festival of learning and curiosity bringing together the Knowledge Quarter and King's Cross to showcase the knowledge embodied in the extraordinary cluster of institutions within the Knowledge Quarter and the learning that underpins the new development at King's Cross.

'Curious?' brought together over 35 Knowledge Quarter partners and friends to produce 64 events delivered over the bank holiday weekend to over 25,000 participants.

PROJECT

Modelling the Knowledge Business workshop

In November 2015, the Knowledge Quarter and The University of the Arts London worked in partnership to host 'Modelling the Knowledge Business' which provided an opportunity for Knowledge Quarter partners to discover rare insights into the ways in which knowledge based institutions and businesses make knowledge available in the commercial marketplace.

This event provided participants with the unique opportunity to present and share information on their particular models for making specialist knowledge available to others, as well as having the opportunity to professionally network and to co-create new knowledge-based business models through collaborative workshop activities.

Interactive light performance
in front of Granary Square.
Benedict Johnson

Local children enjoy a demonstration at the Curious? festival. *Benedict Johnson*

The Knowledge Quarter is supporting the local community by increasing access to joint resources and collections of Knowledge Quarter partners and creating opportunities that provide social and economic benefit.

A comprehensive programme of community engagement events, activities and projects are being delivered that aim to foster relationships between the Knowledge Quarter, young people, schools, charities and the local residential community.

In 2015, we welcomed our first school partners, Regents High School and Netley Primary School.

Three areas of community engagement activity the Knowledge Quarter delivered: the 'Secrets of the Knowledge Quarter' community walking tour, the Knowledge Quarter apprenticeship programme and the Primary Careers Conference.

PROJECT

Knowledge Quarter Apprenticeships

The Knowledge Quarter, in partnership with Camden Council, has developed a higher apprenticeship programme which, in time, will cover science, technology and the creative industries, allowing apprentices to earn and learn on the job while studying part-time.

The pilot scheme, starting in autumn 2016, will be for the laboratory scientist apprenticeship where participants will work as lab technicians while they study for a degree connected to the life sciences sector such as biology. We are delighted to announce that The Francis Crick Institute, London BioScience Innovation Centre and Royal Free Hospital will be our first employers for this exciting initiative.

PROJECT

Primary Careers Conference powered by the Knowledge Quarter

The Knowledge Quarter is partnering with Netley Primary School to deliver a one-day conference in April 2016 to showcase the variety of industries and career opportunities available from Knowledge Quarter partners and friends.

The conference will target students in year 5 (age 9-10) and in particular young people from vulnerable groups. The participants will come from 30 schools within Camden and Islington. After the conference each child will be appointed as a careers champion and provided with a toolkit which they can use to arrange their own school specific careers event, reaching even more children.

PROJECT

Secrets of the Knowledge Quarter walks

In July 2015, the Knowledge Quarter partnered with Camden Tour Guides Association to produce two walks in the Knowledge Quarter for members of the local community, their aim was to reveal more about the world-class institutions and wealth of artefacts located in the Knowledge Quarter, plus the people and stories behind them.

On the walks we passed many of the locations of Knowledge Quarter partners, learning about their participation and discovering their hidden secrets. The participants discovered that knowledge is not just confined to institutions but is populated by lives of people who have generously shared their knowledge and ideas over the centuries.



The Knowledge Quarter is identifying, advocating and supporting work to improve our local sustainable environment in partnership with local councils, Transport for London, the Greater London Authority and other organisations.

The Knowledge Quarter represents the views of its partners on issues that impact the local environment through public realm and infrastructure initiatives. Collectively the Knowledge Quarter is working to ensure that our partners, community members and visitors can enjoy a better place to live, work and visit.

In 2015, as well as responding to consultations on Transport for London's North-South and East-West Cycle Superhighways and Transport for London's Proposed Ultra Low Emission Zone, the Knowledge Quarter have developed, for launch in 2016, an audit of local public realm within its boundaries so that partners have a better understanding of the critical public realm and environmental issues that need to be addressed in the area.

PROJECT

Transport for London proposed ultra low emission zone (ULEZ)

In January 2015 the Knowledge Quarter responded to TfL's proposal for an ultra-low emission zone covering part of the Knowledge Quarter. The ULEZ is an area within which all vehicles will need to meet exhaust emission standards or pay an additional daily charge to travel.

While we supported the principle of the ULEZ and welcomed TfL's work in this area, we recommended that the proposal stretch itself further by extending over a wider geographical area, to take into consideration increased congestion on the Euston Road.

Legible London signage in the Knowledge Quarter. David Hares



PROJECT

Transport for London North-South and East-West cycle superhighways

In December 2014, the Knowledge Quarter supported the TfL's proposal to make a continuous, high quality, substantially segregated cycle route between Elephant & Castle and King's Cross.

The Knowledge Quarter welcomed the development of a North-South Cycle Superhighway that would provide a clear, convenient and safe route for cyclists in the Knowledge Quarter.

The Knowledge Quarter will be assisting with their forthcoming consultation through a series of activities with the local community and Knowledge Quarter partners.

PROJECT

Knowledge Quarter public realm audit

The Public Realm Audit is currently being developed, for launch in Summer 2016, to provide a baseline for the quality of the public realm within the Knowledge Quarter. The audit will include research into public realm activities and improvements being undertaken by the London boroughs of Camden and Islington, Transport for London and significant landowners or agencies.

This important piece of research will be key to developing public realm policy interventions, and will assist the Knowledge Quarter in selecting areas that should be prioritised for funding and investment.

Teaching Fellow in Big Data Analytics Steven Gray (left), demonstrates the London Data Table which displays analytical data about the capital to (from second left to right) Chancellor of the Exchequer George Osborne, Chief Executive of the British Library Roly Keating and Chair of the British Library Baroness Tessa Blackstone, during the launch of the Knowledge Quarter, at the British Library.
Press Association Images

The Knowledge Quarter advocates as a single voice on issues that are relevant to its partners and is working to increase the area's profile through stakeholder engagement.

Over the past 12 months the Knowledge Quarter has built its profile as a centre for research and innovation in the King's Cross area amongst policy makers and stakeholders. Equally the use of the phrase 'Knowledge Quarter' is now being by politicians and influencers to describe the area.

Communications continue to support the implementation of projects around each of the four Knowledge Quarter strategic priorities. We are using our e-newsletters and social media networks as powerful tools to keep in touch with partners and stakeholders and disseminate information and opinion.

PROJECT

The knowledge economy and innovation districts

The Knowledge Quarter have partnered with Centre for London, a think tank focused on the big challenges facing London, to deliver a study exploring how London's universities work with developers, investors and local authorities to create new growth areas for knowledge-intensive businesses.

The research, due for completion in early 2016, considers what features of the 'innovation district' model are transferable to the London context, and what lessons can be learnt in ensuring that new, expanding or relocated academic and research facilities can attract new investment and foster growth in existing businesses.

Knowledge Quarter communications

Our activity over the past 12 months has seen us deliver a comprehensive marketing and promotional campaign to encourage stakeholders, partners and their employees to engage with the Knowledge Quarter. Over the past year we have delivered:

ADVOCACY & COMMUNICATIONS



12 e-newsletters



30,000 website visits



120 blog posts



Over 50,000 Twitter impressions a month



Over 50 appearances in the press



Reaching over 1 million across print and online



Over 50 speeches and presentations



6 international visits

Our task now is to build on what has been an extraordinary first year and to continue to encourage conversations and collaborations between the Knowledge Quarter network and beyond. The Knowledge Quarter will continue to develop collaborative opportunities with its partners and high profile projects around its four strategic priorities.

In 2016 the Knowledge Quarter will:

- host our second Festival of Knowledge for over 30,000 Londoners
- launch a Knowledge Bank – an online skills platform that will power knowledge exchange in the Knowledge Quarter;
- open our first Higher Education Apprenticeship scheme with local STEM partners;
- host a Primary Careers Conference inspiring young children to learn about the opportunities within the Knowledge Quarter, empowering tomorrow's professionals;
- learn how we can improve our local environment and public realm, by auditing the area in depth, enabling the development of a blueprint for improvement to our public realm;
- increase the profile and awareness of the Knowledge Quarter with set-piece strategic events, discussing the key policy issues facing the area;
- think about the benefit of innovation clusters with policy makers and leaders by partnering with the Centre for London's research on innovation clusters;
- inspire our partners and supporters with an on-going series of events, debates, conferences and partnerships that will encourage participation with the Knowledge Quarter's activities.



- 1 Aga Khan University
- 2 The Alan Turing Institute
- 3 Art Fund
- 4 Arts Catalyst
- 5 Bertha Dochouse
- 6 Bio Nano Consulting
- 7 Birkbeck, University of London
- 8 BMJ
- 9 Briffa
- 10 British Library
- 11 British Museum
- 12 Camden Council
- 13 Central Saint Martins, University of the Arts London
- 14 Charles Dickens Museum
- 15 CILIP
- 16 Conway Hall
- 17 Crafts Council
- 18 Creative Industries Federation
- 19 Design Council
- 20 Digital Catapult
- 21 Foundling Museum
- 22 The Francis Crick Institute
- 23 FutureLearn
- 24 Gasholder
- 25 Google
- 26 Guardian News & Media
- 27 Impact Hub King's Cross
- 28 Institute of Ismaili Studies
- 29 Institute of Materials, Minerals and Mining
- 30 Institute of Physics
- 31 Kings Place
- 32 LGiU (Local Government Information Unit)
- 33 London Canal Museum
- 34 London Metropolitan Archives
- 35 London Review of Books
- 36 London Universities Purchasing Consortium
- 37 MRC Technology
- 38 NCUB (National Centre for Universities and Business)
- 39 Netley Primary School
- 40 Paul Hamlyn Foundation
- 41 Poet in the City
- 42 The Place
- 43 Regent High School
- 44 Royal College of General Practitioners
- 45 Royal College of Physicians
- 46 Royal Veterinary College
- 47 The School of Life
- 48 Scriberia
- 49 Springer Nature
- 50 SOAS, University of London
- 51 Society of College, National and University Libraries
- 52 Somers Town Community Association
- 53 SQW
- 54 Tête à Tête
- 55 University College London
- 56 University of London
- 57 Urban Partners
- 58 Wellcome Trust
- 59 Westminster Kingsway College

12,000

academics

catalogued items
180,000,000

annual visitors

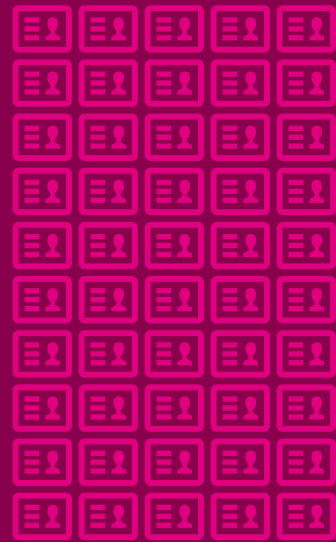
10,000,000

13 cultural institutes



77,000

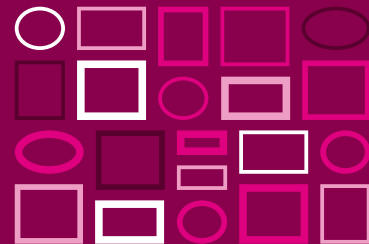
students



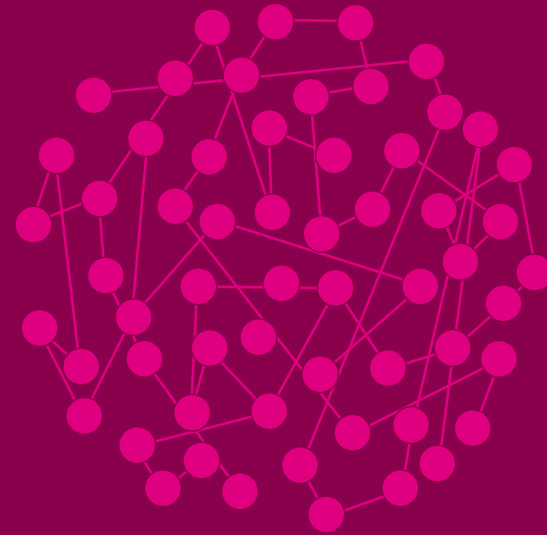
50,000 staff



7 higher education institutions



21 museums and galleries



59 partner organisations

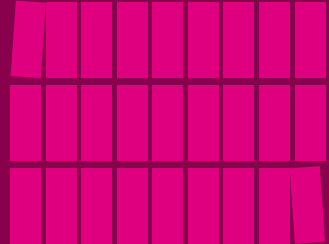
5

HUNDRED

research groups, centres and institutes

306
published
journals

- 1 Primary School
- 1 Further Ed College
- 1 Community Association
- 1 Secondary School



27 libraries and archives

1000

2000

3000 scientists

Over the past year the Knowledge Quarter has developed a network of organisations outside of the partnership that we have collaborated with in our programme of activities:

Argent, King's Cross
Bloomsbury Festival
Cabinet Office – Government Innovation Group
Camden Tour Guides Association
Centre for London
Charlotte Mecklenburg Library
City of Vienna
Engineering and Physical Sciences Research Council
London and Partners
London First
London Stansted Cambridge Consortium
MuseumNext
National Library of Korea
The Culture Capital Exchange
Transport for London

Jodie Eastwood

Project Manager

T +44 (0)20 7412 7116

E jodie.eastwood@bl.uk

Angelo Napolano

Project Support Officer

T +44 (0)20 7412 7434

E angelo.napolano@bl.uk

Daniel Stevens

Advocacy and Communications Manager

T +44 (0)20 7412 7198

E daniel.stevens@bl.uk

Knowledge Quarter

96 Euston Road

London NW1 2DB

T +44 (0)20 7412 7116

E info@knowledgequarter.london

T [@KQ_London](https://twitter.com/KQ_London)

www.knowledgequarter.london



HIGHBURY

ISLINGTON

FINZROVIA

COVENT GARDEN

BLOOMSBURY

HOLBORN

Camden town

Scriberia

Google HQ

Royal Veterinary College

Creative Industries Federation

Urban Partners

Central Saint Martins, University of the Arts London

Art Fund

Guardian News & Media

Poet in the City

London Canal Museum

Springer Nature

Camden Council

Bio Nano Consulting

Institute of Physics

Impact Hub King's Cross

Crafts Council

Design Council

King's Cross

LGIU

Paul Hamlyn Foundation

The Francis Crick Institute

FutureLearn

The Alan Turing Institute

British Library

Digital Catapult

Arts Catalyst

Angel

Design Council

London Metropolitan Archives

Charles Dickens Museum

Bertha DocHouse

Founding Museum

The School of Life

University College London

London Universities Purchasing Consortium

SOAS, University of London

Birkbeck, University of London

British Museum

London Review of Books

Conway Hall

Chancery Lane

Holborn

Netley Primary School

Society of College, National and University Libraries

Royal College of General Practitioners

Aga Khan University

Royal College of Physicians

Institute of Ismaili Studies

Wellcome Trust

University College London

Institute of Materials, Minerals and Mining

Great Portland Street

Regent's Park

University of London

London Universities Purchasing Consortium

SOAS, University of London

Birkbeck, University of London

British Museum

London Review of Books

Conway Hall

Chancery Lane

Holborn

Netley Primary School

Society of College, National and University Libraries

Royal College of General Practitioners

Aga Khan University

Royal College of Physicians

Institute of Ismaili Studies

Wellcome Trust

University College London

Institute of Materials, Minerals and Mining

Great Portland Street

Regent's Park

University of London

London Universities Purchasing Consortium

SOAS, University of London

Birkbeck, University of London

British Museum

London Review of Books

Conway Hall

Chancery Lane

Holborn